

SPRING/SUMMER/AUTUMN/WINTER

D

DOWNLEY  
COMMUNITY

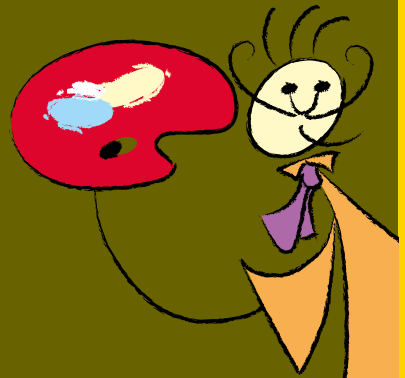
# Village News



## Features

Local Events  
Local Societies  
Lifestyle  
History  
Poetry Corner  
Downley Diary

Issue 91 / May 2012



DETAILS OF ART SHOW INSIDE



## It's our business so we care.



The Partners of Wye Residential gained knowledge and expertise working in the most successful estate agencies in High Wycombe. On the take over of these long established companies by nationwide chains we recognise there is still a need for a local and independent service.

All partners have invested in Wye Residential and our business is built on delivering an excellent service to our clients. If

you are looking to buy or sell in Downley, High Wycombe or surrounding areas you can be confident that we will deliver on all aspects of Estate Agency in an honest, open and transparent way.



**local and independent  
estate agency at its best**

High Wycombe  
**01494 451300**  
Hazlemere  
**01494 711284**  
**[www.wyeres.co.uk](http://www.wyeres.co.uk)**

# Contents

<b>Editorial</b>	3	Sunnybank Methodist Church	19
<b>Local Events</b>		<b>Lifestyle</b>	
Summer Season	4	What am I?	19
<b>Local Societies</b>		Rallycross and Me!	20
Downley Community Centre Comes of Age	5	Scannappeal	21
Downley Common News	6	Review - Singing in the Rain	21
Chameleon Singles Group	7	Welcome To Downley!	22
Downley Gardening Society	8	Cheeseboard	23
St James' The Great Church, Downley	8	Downley Village Arts Show 2012	24/25
DOSCA Community Library	9	Get Creative and be a Winner!	26
Coffee Stop	10	Can You See What It Is Yet?	27
Brand New Pharmacy for Downley	11	J. Heartycough Horticultural Hints	28
Disraeli Downley Youth Club	12	<b>History</b>	
Downley School	13	Downley Ancestors part 2	29
Parish Council Chairman's Report	14/15	<b>Poets Corner</b>	
Parish Council News	16	The Poem What I Wrote	30
The Downley Choir?	16	Caring and Sharing	31
Houses in Multiple Occupancy	17	<b>List of Advertisers</b>	66
St James Parish Church	18	<b>Downley Diary</b>	Back Page

## Editorial

**As I write this, the rain is still teeming down as it has been for the last two weeks and the pond at the bottom of of my garden is no longer at the bottom! The rumour goes that the traditional shipbuilding industry in Downley is considering a new range of Arks, to be completed by the time the floodwaters start rising up Plomer Hill. Bookings will be taken through the Village News for those looking for an escape route.**

The irony of flood warnings against a backdrop of drought orders might make an interesting topic for both the poetry, photography and the art section of the forthcoming Art Show which is described in more detail below. Prospective poets can read Maggie Womersley's article on how to do it.

Other local topics worthy of commemorating must surely include some of the recent developments in the village, such as the new pharmacy about to open at Cross Court and the recently refurbished Community Centre at School Close. The new Community Centre will also be hosting an operational base for the Police which will hopefully enhance both their accessibility and visibility in the village. A campaign should now start to have a blue light installed outside their office (it's rumoured that the room is bigger on the inside than it looks!).

This edition also precedes the forthcoming Downley Summer Season which this year includes the Downley Diamond Night celebrating the Jubilee on 4th June, the Music Evening at Downley School on 14th June, Downley Day on the 23rd June, and the Concert on the Common on 14th July. Individual organisations are also holding their various summer fayres, all of which can be found on the [downley.org](http://downley.org) calender. Sign up for the eNews on [www.downley.org/news/newsletter](http://www.downley.org/news/newsletter) if you want to be notified as they come up.

*Bill Thompson, Acting Editor (still looking for a permanent one!)*

# Downley Summer Season

**It may not be Glyndebourne and Ascot but Downley still has plenty to offer this summer as the list below demonstrates. Make sure these dates are in your diaries.**

## **4 June 2012: Diamond Jubilee Night on Commonside**

After your street party ends, and come celebrate the Queen's Diamond Jubilee starting at 7.30pm with Music by the Wycombe and Great Kingshill Band followed by Allergy. A barbeque all evening will be topped off by the lighting of the beacon and fireworks at 10pm.

**If you are available to help put up the Community Centre tent (it takes about 8 people for 30mins) and/or act as a steward for the fireworks, please contact Chris Hamilton on 01494 462195 and turn up at 6.30pm.**

## **14 June 2012. Music Evening at The Downley School**

Children from the Downley School and other young (and old) members of the community, display their musical skills starting at 7.30pm. Ranging from beginners to the seriously good, these performances will entertain and maybe inspire you!

## **18-22 June 2012 Downley Arts Show**

Who hasn't heard about the Downley Arts Show by now? All you budding arts & crafters, photographers, sculptors and poets take note. The exhibition of entries will be on at the Community Centre from the Monday through Friday before Downley Day with Prizes for the youngsters presented at Downley Day itself. The grown-ups get the chance to have their work exhibited at a prestigious venue in Wycombe. See the article in this edition for more information.

## **22 June 2012. Family Disco on the Common**

Bring your kids along to the Marquee on the Common at 7pm, the evening before Downley Day for the annual family disco. While your kids are having fun you can relax with a picnic and refreshing beverage on the Common on a beautiful warm summers evening.

## **23 June 2012 Downley Day**

Downley Day kicks off at 1pm with the traditional opening by the Downley Queen. Come and see the dancing, martial arts, acrobatics and drumming. There will be plenty to buy, eat, play and sing to, so bring plenty of cash to support your local community.

**Local organisations wishing to put on a stall should send an application form (found at [www.downleycommon.org.uk/downleyday/forms](http://www.downleycommon.org.uk/downleyday/forms)) to Dave Stagg at [d.stagg@tesco.net](mailto:d.stagg@tesco.net).**

## **14 July 2012. Concert on the Common. 7-10pm**

CotC this year features "Cry Wolf", a west London rock band who play all your old favourites. Bring some drinks and nibbles to rock the night away.

The usual call goes out to young local groups who want to showcase what they can do in the interval. **Contact: [news@downley.org](mailto:news@downley.org) if you're interested.**

# Downley Community Centre Comes Of Age

**The idea of converting Downley's original old Victorian School into a local community centre was first proposed about 11 years ago.**

This was part of a wider Downley Village Survey which created a residents wish list from which surprisingly, many significant benefits for Downley have now been achieved.

One of the most sought after additions for Downley was realised on 3 May 2012 when the enlarged Community Centre was officially opened by Cllr Wendy Mallen.

Over 50 invited guests including the Bucks Free Press and a County Council film unit attended the opening. This was marked by a formal ribbon cutting ceremony followed by tours of the new facilities for those who hadn't visited the Centre since the refurbishment programme was completed.

New facilities include a fully equipped kitchen, new toilets, including a dedicated disabled toilet, new foyer and meeting room.

The event also formally announced that the centre was to become a local base for Thames Valley Neighbourhood Police who are planning to hold regular 'have your say' sessions with local residents.

The Downley Community Centre is owned by Downley Parish Council and run by local volunteers who have formed a registered charity to run the facility. Some twelve local volunteers, including parish councillors, act as the trustees of the Downley Old School Community Association which manages all day-to-day events and services and maintains the facility.

Funding for the enlarged centre was achieved through a variety of sources,



the bulk of which came from the sale of the Downley Middle School by Bucks County Council to Barrett Homes for the development of Downley Park. Other contributions were made by Awards for All, who specialise in small community project funding using lottery funds, and regular donations made over a number of years for specific improvements from Downley's District and County Councillors both of whom were in attendance at the opening.

**Additional information:  
Updated photographs, floor plans and booking details can be found at [www.downley.org](http://www.downley.org) where a new 4 page A5 colour brochure can also be downloaded.**



# Downley Common News

## Another Surprise from Manning's Pond

**Manning's pond lies at the north end of Downley Common and is most easily found when walking the bridle path that continues past the allotments. It is man-made, clay-lined, at least 300 years old and was constructed to supply water for the drovers' cattle as they walked from as far away as Wales to feed the ever-growing population of the City of London.**

As the railways provided a quicker and easier route to London so the old drovers' routes began to decline and gradually Manning's Pond, and others like it, began to silt up. By the early 1990s trees were even growing in the middle of the pond as well as all-round the edges, and the depth of the water was only a few inches.

In the winter of 1992 the Downley Common Preservation Society, with funding help from Wycombe District Council, brought in a JCB to remove the silt and the trees in the pond, and they also removed a number of surrounding trees to allow more light to the pond. The following summer, as water levels in the pond fell, a passing botanist spotted a small white flower that he had never come across before and subsequently identified it as a Starfruit. This extremely rare plant, which at the time was only known in one other pond in the UK, is named after the distinctive fruits that this plant bears, which appear as a six-sided stars.

The plant is unusual in that it thrives on disturbance but loses out to other more vigorous plants when there is no disturbance. Being on a drovers' route the



surrounds of Manning's Pond and the pond itself, would have been subject to frequent trampling by passing cattle, ideal conditions for the Starfruit to flourish. The work carried

out to refurbish the pond mimicked this disturbance and enabled its reappearance. You may be aware of the work that was carried out to renovate the ponds on Naphill common and elsewhere, all of which arose from the discovery of the Starfruit at Manning's Pond.

More recently the Downley Common Preservation Society has been considering what further work is required at Mannings Pond as it has been getting overgrown with weed again and the willow trees have started to multiply.

As a precursor to any work, the DCPS has commissioned a survey of Manning's Pond by a local ecologist to see what flora and fauna are to be found there, and although the survey has only just begun, Great Crested Newts have been found as well as the more common Palmate variety. The Great Crested Newt and its habitat are protected by law, and any restoration or maintenance work on the pond will need to be cleared first with English Nature. Whilst newts breed in ponds they actually spend much of their life on land, but their larvae will spend up to 6 months in the pond before losing their external gills and becoming true amphibians.

The society will be paying careful attention to the ecologists report to see just what we can do in the long-term to ensure that Manning's Pond continues to surprise us. Watch this space.

*Bill Thompson.*

*Downley Common Preservation Society.*

# Chameleon Singles Group

**Other than a short reprise in late March the cold snap that seems to have extended through April has meant our indoor activities have proved the most popular.**

However we did enjoy a day trip out to Chislehurst Caves in South-East London recently which is perhaps one of those events that is effectively weather proof! Attendance at events such as the Pub Night, Quiz Night and Friday Lunch Club always see a good number of members out and in the case of the quiz we have yet to receive the wooden spoon. We have yet to win but have come a close second on a couple of occasions and it is a great evening out to end the weekend.

We are still attracting a number of new members and hence the Pub Night was moved to a venue that could better cater for larger numbers. We have changed the Lunch Club venue too by giving the re-launched Dolphin in Totteridge a try. This seems to be working well and offers a reasonably varied and priced menu for lighter lunchtime options.

Our programme has a number of regular events and also some specials appropriate to the season. With summer ahead a few more outdoor events will be included in our calendar of events. We continue to be open to new ideas and encourage all our members to get involved as organisers be it an at home event, trip out or to a venue such as the pub, theatre or cinema. Over the next few months we have a visit to the Marlow Brewery,

Quiz Night, Indian meal, at home supper, Cinema evening, Games night, walk and a museum visit all planned.

Our pub night on the last Friday of the month is a great place to meet new members and you would be very welcome to come along. We meet from 8pm at The Old Oak on New Pond Road in Holmer Green and there is food available if you wish to eat. You are of course welcome just to join us for a drink, a chat and to find out more about the group.

As mentioned earlier membership has been steadily increasing over the last few months and includes a number of local people from Downley, West Wycombe, Sands and surrounding areas. If you are single, 30 plus, looking for a social life and new friends then why not give us a try? There are no strangers at Chameleon, just new friends to be made in a social group run by and for its members.

**To find out more call Joyce on:  
01494 461328, Martin on 07747 703663 or  
e-mail: [chameleon\\_bucks@tiscali.co.uk](mailto:chameleon_bucks@tiscali.co.uk).  
You can also visit us on the web at: [www.bucksinfo.net/chameleon](http://www.bucksinfo.net/chameleon) where there is  
further information and an events listing.**

## EDITOR FOR THE VILLAGE NEWS

Did you enjoy this edition of the Village News? Could you do it better? If so, Contact Bill Thompson at: [news@downley.org](mailto:news@downley.org)



# Downley Gardening Society

So far this year we have had talks on:

- **The world of Fungi**
- **The Glories of a Garden**
- **An illustrated talk on National parks**
- **Austin Roses**

Our speakers are all professionals and provide very entertaining talks after which coffee, tea and biscuits are served free of charge along with a monthly raffle. Non-members are always very welcome.

All talks are held at the church hall behind St James' church, Plomer Hill starting at 8pm. Members pay just £1 and non-members £1.50 per talk.



Future talks are:

- **Monday 21st May – Popular cottage style gardening by Brian Fisher**
- **Monday 15th October – Amazing range of grasses and grass effect plants in the garden by Brian Fisher**

We have a stall at DOWNLEY DAY with lots of plants for sale and Our AUTUMN SHOW on Saturday 8th September. We also arrange coach trips to various gardens and Wisley and a visit to a local garden.

**Membership is £8 per household and £5 for senior citizens. If you have any queries please contact Ken on: 01494 524622**

## St James' The Great Church, Downley

**It appears that there are various rumours going around the district concerning St. James' church, and we want to outline what is happening.**

You may be aware that, for forty years, the church building has been shared between a Catholic congregation and a Church of England congregation and many wonderful friendships have been established during this time. It is therefore with great regret the Diocese is withdrawing the Catholic priest from St. James'. This is due to a chronic shortage of priests, and we can no longer afford the luxury of running a small local church, even when it is home to a growing worshipping community. The final service will be on Sunday, May 13th at 3.00pm and all parishioners are welcome.

After the 13th May weekend Masses in the area will be as follows.

**Our Lady of Grace, Squirrel Lane, Booker:**  
Vigil Mass Saturday 6pm  
Sunday Mass 11am

**St Wulstan's Totteridge Lane:**  
Sunday 9am

Mass times at St Augustine on Amersham Hill remain the same.

**Please Note: St James' Church of England community will not be affected by these changes. All of their church services and other activities will continue as usual.**

# Support your local voluntary Library



Downley Community Centre  
School Close,  
Downley,  
High Wycombe  
Buckinghamshire HP13 5TR  
Tel: 01494 528133

## Library Opening Times

Mondays 10-12 noon

Thursdays 3-5 pm

Saturdays 10-12 noon

There is a charge of 20p per book for up to three weeks loan and a 20p charge per week is made for each overdue item up to a maximum of £3.00. The loan period may be extended by phoning the library during opening times. There is now a free loan on all children's picture books.

Email: [enquiries@downleylibrary.org.uk](mailto:enquiries@downleylibrary.org.uk)

## Library counter



Downley Day is fast approaching! On the day why not visit the library stand and buy a bag of books, or take part in the "Guess the Number of Words" competition. This year we are celebrating the centenary of a great British author, unfortunately we can't tell you the title of the book, because you would all get the answer correct. By the way the winner will receive a £10 voucher. All proceeds from the sale of books and the competition go to swell the library funds. If you have any books gathering dust please read the note at the bottom of the page.

## Computer & Internet Facilities



The library has two computers for member's use, both with internet connection. This facility is free. We also have a copier/printer available. Charges are 10p for a monochrome and 25p for a colour copy. We can also laminate your prints up to A4 size for 75p a copy.

We are looking for any used books that are no longer required, these may either be used as library stock or to gather funds for the library on Downley Day.

# The Coffee Stop

**In February we lost our dear friend and colleague, Carol Haynes. Carol had borne a debilitating illness with courage and cheerfulness and was truly an example for us all, we miss her and extend our condolences to her husband, family and friends.**

Our Easter event was a great success, Jean provided a beautifully decorated and delicious traditional simnel cake and Pauline and Lyn organised and displayed a fantastic raffle of Easter themed prizes. The raffle raised £83.

Joan's jar of 5p coins was a great idea and provided considerable interest. The total amount raised (including guessing the number of coins in the jar) was £51.50.

In the "so called" summer months we discontinue having soup on the menu, but since we appear to have had our summer in March and the weather has been distinctly cool, several people have been disappointed but don't worry, it will be back in the autumn. We have regular meetings to discuss ideas and future plans so if there is anything you would like us to consider please let one of the helpers know.

Downley Day is fast approaching and as usual we are grateful for all offers of help on the day and donations of cakes and home produce. This day is an enjoyable event for all village organisations and there is always something for everyone.

New helpers are always welcome as none of us is getting any younger and the more numerous we are, the less frequently we appear on the rota, you just need to be a dab hand at making drinks and sandwiches and washing up! It's good fun and a great way to make friends.

One of our "regulars" will be celebrating her century in June, we send her our

congratulations and best wishes for many more happy birthdays.

We are proud to be part of a village that has so many facilities and organisations providing the "glue" that keeps us together, and being an informal safety net whilst generally having fun. The Community Centre in the old school has undergone a considerable transformation, and will make a fine venue for local people and the improvements may attract more people to use the library; all of us need local support to keep going.

It is going to be an exciting summer with The Jubilee and the Olympics to celebrate, meanwhile our very best wishes to all, hope to see you on a Monday.

*Ann Buxton  
pabuxton@hotmail.com*

## **Downley Evening WI**

Ladies, have you ever thought of joining the WI? Come and see for yourself on the second Tuesday of each month at 7.45pm inside the Pastures Church Hall, HP13 5RR. You can be assured of a very warm welcome and an interesting evening.

In the next few months we look forward to talks on:

- **The Italian Experience in July by Mr D Hewitt**
- **Mercy Ships in August by June and Ken Brazier**
- **The History of The King James Bible by Neil Rees in September**

You can also join us on outings, quiz evenings and participate in any number of other activities. Our Literary Lunch is especially popular. If you are looking for new friends and a break from home and work, you will find it here with us.

**For further details contact : Janet Durkin  
01494 535662**

# Brand New Pharmacy for Downley

**The residents of Downley will soon have a pharmacy to call their own after the lengthy process of establishing a pharmacy service in the village is finally coming to fruition.**

The long awaited and aptly named “Downley Pharmacy” will replace the now closed Fairy Godmother shop on Cross Court and is due to open on 18th of June 2012. An official opening ceremony & reception for the local community will be held shortly thereafter.

The provision of a new pharmacy for the area will greatly improve access to services and convenience for patients as they will be able to order & collect their repeat prescriptions without making a time consuming & costly journey to the town centre. Patients will be able to order their prescriptions in person, over the phone or online at [www.downleypharmacy.com](http://www.downleypharmacy.com). Prompt access to pharmacy-only medicines and professional advice on treating minor illnesses will also now be available on your doorstep.

The pharmacy will open 9am-6pm weekdays & 9am-12pm on Saturdays and will offer a full range of services including a stop smoking, diabetes/ blood pressure screening, and free prescription collection from all local GP surgeries. Free prescription delivery

will also be available if required. It is easy to change pharmacy, simply speak to a member of staff once the pharmacy opens and you will be guided through the process.

“One of our aims in setting up this new pharmacy is to work differently from established pharmacy companies” says Fiona Wyborn, pharmacist in charge. “We want our pharmacy to be at the heart of the local community, so we have decided to install not one, but two treatment rooms within the pharmacy so that other health & beauty services such as chiropody, physiotherapy and complimentary therapies can be provided locally. I am keen to hear from any practitioners interested in renting a room & providing such services and, indeed local residents about any other services they would like to be made available locally.”

**You can post comments on what services/products you'd like to see at the pharmacy and stay up to date with developments by clicking “Like” on the pharmacy facebook page:**  
[www.facebook.com/DownleyPharmacy](http://www.facebook.com/DownleyPharmacy)



# Disraeli Downley Youth Club

Disraeli Downley Youth Club is based at St James's Hall, Plomer Hill Downley on 3 or 4 Monday evenings a month.



Sessions are from 7 to 9pm. All young people are welcome from school year 6 (the last year before transfer to upper schools) up to age 16. That includes visitors as well as residents and young people just dropping in to see what we're like. Club nights are supported by enthusiastic volunteers including assistant volunteers who are ex club members. Action4Youth, a local charity, has supported us including providing CRB checks and training for our volunteers.

We work in conjunction with youth groups (the Downley Sports Association (Dynamos, Albion, Colts and Cricket Club) and other clubs and societies, as well as schools, faith groups, councils and other local and national organisations interested in opportunities for young people.

Facilities at St James Hall include pool, table football, table tennis, tuck shop, manhunt and football outdoors in the summer evenings, open evenings and special sessions such as cooking (popular with boys and girls!), X Factor sessions with karaoke and Street dance.

Forthcoming club dates are:

- Longridge weekend 26th 27th May
- BBQ open evening on Downley Common (new members welcome) 21st May, 2012

Other trips have included Ten pin bowling, Ice skating and Thorpe Park

If you want to try out a taster visit turn up any club night to see what is on offer. Bring parents or guardians if you like. Phone first to make sure we're not away on a club outing!

Club leader, Jo Slifi, welcomes new members and volunteers.

The club is fully supported by Disraeli Downley volunteers and the Disraeli Downley Youth Steering Group which is the management committee for the Youth Club

Training is available for volunteers. If you can spare some time and want to see if volunteering or management work suits you, look us up.

Sponsors include Wycombe Lions Action4Youth, Buckinghamshire CC, Wycombe DC, Downley Parish Council, St James's Church Hall Committee, St James's Church congregations (Anglican and Catholic), Thrifty Van Hire, Disraeli Ward Councillor of Wycombe Town Council and Anonymous donors.

<http://www.facebook.com/pages/Disraeli-Downley-Youth-Club/273029422729030>

**Contact Patrick Crotty:**  
**07711 107975**  
**Patrick@crotty.co.uk**

# Downley School

## Spring has brought lots of new babies to The Downley School.

Three of our teachers have all had beautiful babies and are enjoying their maternity leave. Whilst they are away, we have been fortunate to recruit two wonderful new teachers to our school who have settled in very happily.

As ever, March was a very busy month. It started on 1st March with World Book Day. All the children received book tokens and Years 1 and 2 were inspired by a fabulous visiting storyteller. Year 3 had an exciting time when they were visited by some birds of prey as part of their science curriculum. In addition, one of our very kind parents visited to teach the children more about plants. It is always a delight to welcome parents into school, especially when they bring their own expertise to add depth to the curriculum. Thirty Year 4 pupils performed brilliantly at Energize 2012 at The Wycombe Swan. All the Year 4 children had a wonderful time being involved and the children who actually performed on two nights were so professional! The whole performance was breathtaking (especially the 'Predators & Prey' part). Year 5 were also extremely busy. Their production of Wind in the Willows was just brilliant. They also had a Tudor Day as part of their history project. It was a joy to see them dressed up as young Tudors. They learned a great deal on that day and gave a wonderful performance which included Tudor dance and playing music on Tudor instruments. Year 6 have been learning about mini enterprise and some pupils represented the school in a Mini Enterprise competition at The Cressex School. They came a close second and were highly commended by the judges for their creativity and politeness. Year 6 also visited



The Pastures Church for a workshop entitled 'Easter Eggsplained' – the clue is in the name! Although our Reception children haven't been out this month, they have been working really hard and are making excellent progress.

Our sports teams have been very active this term. Home and away netball and football matches and tournaments have been taking place and our teams have been doing us proud. You can look on the website for details of matches and scores.

We have welcomed lots of parents into school in the last couple of months for events such as a consultation day and parents evenings. Our dads also joined in Sport Relief Day with great enthusiasm! A page from our Visitors Book says: "Wonderful! Thank you for inviting us in. It was great to see the children so engaged and enjoying their school life. Please have more days for parents to get involved!" Our Parents Association organised a very successful Quiz evening in March. There was lots of fun as well as some stiff competition, with the Governors team winning by just a few points in the end.

This term, the whole school is focussing on The Olympics as a starting point to all areas of the curriculum. Everyone is buzzing with excitement about this project as different year groups find new and creative ways to explore different aspects of this fantastic event incorporating all areas of the curriculum. We are looking forward to working with our neighbouring schools, Maplewood and The Disraeli School, as part of our Olympics project. Let's hope the sun shines on us through the next few months.

*Mrs Webb, Headteacher*

# Annual Downley Parish Council Chairman's Report (abridged)

At the start of our new year we welcomed 5 new Councillors following the retirement of several long standing officers. I am delighted that they all accepted their appointments with great enthusiasm and are playing an important part in our Parish Council.

It was with great sadness that we lost our Vice Chair, Anthea Worsdall, who passed away after a long, but courageously fought illness. Her legal knowledge and calming influence in debate are sadly missed.

One of the key areas requiring attention, identified by the Downley Community Plan, was the need to improve communications within the village. I believe that the development of the Downley Village News, the new eNews and the upgraded website have answered this requirement. Your Parish Council wish to sincerely thank the Communications Forum for all their hard work in achieving this. Special thanks are attributable to the new treasurer, Clive Beard who has helped to place the magazine on a firm financial footing.

Planning applications have continued unabated. A total of 53 have been studied with all sites being visited and representations made where it was considered that proposals were detrimental to residents in neighbouring properties. There remain however several outstanding applications requiring enforcement notices which are being actively pursued.

One very contentious issue that apparently did not require planning approval was the construction of the Trieff curbs and the narrowing of the carriageway over the Plomer Hill Bridge. Despite very strong representation, your Parish Council were told by Transport for

Bucks (TfB) that we had no input as it was a case of safety and the urgent need to reduce the weight load over the bridge and adjacent walkways owned by British Rail. The resultant queues of traffic at peak times are clearly evident even though the traffic lights at the junction with the A40 have been reprogrammed. In the opinion of your Parish Council this was a short term fix to a long term problem. We will continue to monitor the situation and make further representations to Transport for Bucks whenever possible.

Your Parish Council continue to press Bucks Highways for more roadway improvements within the village and currently there is another phase of the resurfacing programme underway. It is considered opinion that this work is inadequate and further requests are being made for increased area coverage as opposed to short term pothole filling.

We failed to secure the funding from the Biffa Award Scheme owing to over subscription, but nevertheless the improvements to our Community Centre, including the new kitchen, toilets, office and foyer have been completed on time and within budget. This has been achieved despite unforeseen problems regarding the safe and certified removal of dangerous asbestos and the rebuilding of part of the damaged Victorian drainage system.

Having already obtained a grant from the Big Lottery funding scheme for the kitchen your Parish Council sought additional loan funding with the guidance of Wycombe District Council. That, together with the retained funding from the S106 agreement and financial support from the DOSCA funds, enabled the building improvements

to go ahead as planned. Many people have been involved, including Cllr Grahame Brown who has diligently overseen all the Health and Safety and fire risk issues, Ken Mclean assisted by Mike Carter who have managed the building project and David Worsdall together with his DOSCA management team, who have made this all possible and we would like to record our sincere thanks to all concerned.

Part of our ongoing plans for the centre, will be the shared use of the new office by Thames Valley Police who will use it as a base from which to operate. Much of this closer collaboration has been achieved by regular dialogue with our local Officers.

Returning to the Downley Community Plan completed in 2010, the action committee meet on a regular basis to pursue the many requests made by Downley residents. It is with great pleasure that we can announce that Downley will have its own Pharmacy with effect from 18th June with the official opening timed for the morning of Downley Day on 23rd June.

The community carol singing, which commenced around the Xmas tree on Jubilee Green was again well attended, as was the Concert on the Common.

Downley Day was once again extremely successful with large crowds attending the wide variety of events. Our special thanks are extended to the Downley Day Committee for an enjoyable afternoon and for the previous evening's disco which was also a huge success.

We now await the Queens Diamond Jubilee celebrations on our common on the 4th June. Plans for which are all in place and a request for warm fine weather has been lodged!

Currently the lighting committee are investigating the potential savings in having all the 157 street lights which are owned by your Parish Council, upgraded to LED lamps which will provide considerable cost savings through the reduction of energy usage with virtually nil maintenance cost. Consideration is also being given to the turning off or dimming these lights between the hours of 12.30 a.m. and 5 a.m. each night.

Other projects in the pipeline include:

- The possibility of a bus shelter outside Cross Court
- Bollards along the grass verge, again outside Cross Court to discourage parking
- The upgrading of the public footpath along Kiln Pond Lane
- Additional grit bins

I would like to take this opportunity of thanking Cllrs Wendy Mallen and Paul Turner for their support and regular attendance at our meetings, and for their updates from County and District level. My sincere thanks also go to my fellow Councillors for their support and in particular to Cllr Grahame Brown for stepping up to become Vice Chairman.

There is one person who makes my role as Chairman so much easier. He is our Clerk, Chris Hamilton who works tirelessly behind the scenes. On behalf of the full Council. Thank you Chris.

*B. R. Gay*

*Chairman of Downley Parish Council  
19th April 2012*

The full version of this report can be read at [www.downley.org/community/publications](http://www.downley.org/community/publications).

# Downley Parish Council News

Copies of the Parish Council's Minutes are available at the Downley Community Library for residents to read. They are also at [www.downley.org/community/publications](http://www.downley.org/community/publications).

Please note that the 8 Parish Council notice boards can be used to display notices for Downley based organisations provided that *at least 4 weeks notice is given*. Please drop off notices at the old post office in an envelope addressed to Downley Parish Council. Please ensure that A.5 size notices are supplied.

## Street Lighting

If anyone wishes to report details of street light repairs needed in the following roads, they need to phone Ringway Jacobs (lighting contractors for Bucks County Council) on 0845 – 2302882. Relevant streets include:

Plomer Hill, Downs Park, Hillfield Close, Hithercroft Road and Pastures from junction with Tinkers Wood Road up to Bellfields, Westover Road, Sunnycroft, South View, Woodcote Green, Pheasant Drive, Southfield Road, Middlebrook Road,

White Close and Merry Down. There are no "scouts" employed to do spot checks of lights that are not working in these areas, so the contractors have to rely on members of the public contacting them with details.

## Council Meetings

Parish Council meetings are on the 2nd Tuesday every month.

In July, September and November meetings are at the War Memorial Hall, starting at 8.00pm.

In June, August, October and December meetings are at the Downley Community Centre, School Close starting at 7.45pm Up to 30 minutes are allowed for public questions.

The Annual Parish Meeting will be held on Tuesday 24th April at the War Memorial Hall starting at 8.00 pm.

Agendas are posted on the Parish Council notice boards at least 4 days in advance.

The Clerk (Chris Hamilton) can be contacted on 01494 462195 or by email at : [downley\\_pc@tiscali.co.uk](mailto:downley_pc@tiscali.co.uk)

## The Downley Choir?

Do you sing in the shower?

How about forming a community singing group?

You don't have to be an Alfie Boe or a Katherine Jenkins, you just need to enjoy singing. No auditions – strictly for fun..

The snag: we can't move forward without a budding Gareth Malone.

If you think this sounds like fun and you'd like to sing or become a musical director, please contact:

Lyn on 01494 436063 or email [grannyandbobby@tiscali.co.uk](mailto:grannyandbobby@tiscali.co.uk) and we could become The Downley Choir!



# Houses in Multiple Occupancy



**Following a recent planning application and an ongoing enforcement notice concerning a property in Downley, it is perhaps timely to highlight an issue which may increasingly become applicable to any one of us.**

Over the recent few years there has been an increasing trend to convert family homes to HMOs (Housing in Multiple Occupancy) or one and two bedroom flats for rent. Whilst there is a demand for these types of accommodation for single occupancy or small families, and development to provide homes that are affordable is to be welcomed to meet that demand, there have been instances where developments have taken place without the necessary permission or adherence to the law.

There are two main reasons why local communities should be concerned.

Firstly the impact on the neighbourhood, particularly the residents in the immediate vicinity, but also the effect that even a small number of these conversions have on the local area: an increased number of vehicles; increased amounts of waste; the short term nature of the tenancies eroding a sense of community and a general lack of respect for the property and for the residents living around them. These problems will of course not apply to all such conversions, but does unfortunately tend to occur in unlicensed HMOs and unsuitable conversions.

Secondly, and just as important, the tenants of unlicensed HMOs, or tenants in small overdeveloped flats tend to be those in society who probably do not have a choice about where they can live and fear that they may lose their home if they complain. I have recently come across an unlicensed HMO (not the case I mentioned above) – a small three bedroom semi with six people A family of three, including

a young child, were living in one room downstairs, there was green mould half way up the walls, and they shared the kitchen and bathroom with the three single men living in the bedrooms upstairs. There was no adherence to any safety regulations. The landlord was getting about £1500 per month in rent.

Properly licensed and managed HMO's do work, and suit many people. A responsible landlord will always respect not only their tenants, but also the neighbours and neighbourhood. Well converted flats will have been through the planning process, and if rented, the landlord is accountable for the actions of the tenants.

The spread of HMO's and applications for conversions is increasing; Wycombe Town centre already has areas where the high levels of converted properties has had an effect on the local area and evidence shows Downley will not be immune. The local authority can only act on unlicensed premises if they receive information; there are enforcement officers who will investigate confidentially in the interest of the neighbourhood and the tenants.

**More information on HMOs and the requirements for licensing with contact details for the enforcement officers can be found on the Wycombe District Council website. I can also be contacted at [paul.turner@wycombe.gov.uk](mailto:paul.turner@wycombe.gov.uk) or 07825 842292.**

*Paul Turner  
District Councillor for Downley & Plomer Hill*

# The Parish Church of St James' the Great, Downley

*off the top of Plomer Hill in Downley*

www.stjamesdownley.org.uk

SUNDAY WORSHIP - 11.00AM



COMING EVENTS - EVERYONE WELCOME

## **Diamond Jubilee Celebration Day** **Saturday 16 June**

### **2.30pm Thanksgiving Service**

Followed by a major FREE public exhibition of many rarely seen church treasures including historic marriage and baptism records. Children's activities. Afternoon Tea served.

### **6.00pm Service of Renewal of Marriage Vows**

Open to ALL married couples and free of charge.

To tell us you're coming, please 'phone 526896

\*\*\*\*\*

### **"Jimmy's" - A Place for Young People (11-18 years old)**

*From 4.45pm to 5.45pm as follows:*

21 May venue: 38 Southview subject: Maturity

\*\*\*\*\*

21 May	venue: 38 Southview	subject: Maturity
18 June	venue: St James' Vicarage	subject: Responsibility
2 July	venue: 38 Southview	subject: Independence
16 July	venue: 38 Southview	subject: Party!!!

WELL EQUIPPED CHURCH HALL FOR HIRE  
CALL 01494 465608

### **Downley Village Evening WI**

Downley Village Evening WI are having several events this summer apart from our monthly meetings so why not come and join our WI and enjoy coffee evenings, local outings and beyond. We meet at the Community Centre on the 1st Tuesday of the month at 7.45pm. Our programme for the next few months is as follows:

3rd July - Jill Frazer talking about her life as a WI speaker.  
7th August - Mike Dewey explaining about local people who had extraordinary lives  
4th September - Edward Dixon with stories about animals in the 1st world war  
2nd October - Joan Dark - looking at the world around us  
November is our AGM /Annual meeting  
December we hold our Birthday party

**Details Mrs P Heath 01494 535998 or BFWI office 01494 526685**

# Downley Methodist Church, Moor Lane (Sunnybank)

**Our minister, Rev. Mike Hill will be away on Sabbatical and annual leave from 7 May until the end of August.**

If you need to contact a minister for any reason during that time, please get in touch with Clive Knapman on HW 437791. Sunday services will run as normal at 0930 each week.

The Sunnybank Craft Club invites all children of school age to come and see the exciting things that go on in the church. Craft Club meetings are the first Sunday in every month from 1000 - 1200 except

during school holidays and we will be running a craft stall at Downley Day again this year. We look forward to seeing you (and your Mums & Dads) there, or at one of the regular Craft Club meetings.

We would like to ask you to put a date in your diary for 0930 on 30 September. It's a great chance to join us for this special day which is both Harvest and Back to Church Sunday. Mike Hill will be leading the service and of course we will be decorating the church for Harvest. It would be really good if you're able to be a part of that - we'll keep a seat for you!

## What am I?

**I am made from egg boxes, weeds, small twigs, hair, newspaper, grass cuttings and veggie peelings. I like air and water. I begin as a pile of mess. I feed worms, bugs and eventually the land. I smell fresh, feel moist and am a rich dark brown colour. I am compost.**

Compost is really easy to make. You just need a small place in your garden, patio or even balcony where you can leave biodegradable things to slowly decompose. To get good compost which doesn't smell it is important to have a balanced mix of green (plants, grass, veg peelings) and brown (twigs, cardboard, newspaper) material, a little water and air (it's a bit like baking a cake). Then just leave it for 6 - 12 months....to cook. You shouldn't add cooked food waste to this sort of system as it can attract unwanted visitors. This can be put in your green bins for the authorities to compost.

I have just become a "Master Composter" and have been charged with spreading the word about the joys of composting and getting degradable stuff out



of land-fill where it turns to methane (a far worse greenhouse gas than carbon dioxide).

I am running a stall at Downley Day so if you have any problems with your composting please come and have a chat. Even if you don't compost, perhaps I can persuade you to put the right things into your green bin so that it can be usefully composted by others.

*Lynne Thompson*

# Rallycross and Me!

**Rallycross: combines the best elements of rallying and touring car racing – it's entertaining, there's plenty of sideways driving and it's close, wheel-to-wheel action all the way. Often, cars go four abreast into a corner – and no-one's backing off.**



The sport was devised in 1967, and soon became massively popular with TV audiences, especially during the 1970s. The fathers of current Formula 1 drivers Jenson Button and Alex Wurz were both rallycrossers - and, by coincidence, both competed in Porsche-engined VW Beetles.

The sport had its boom days in the 80's when live TV coverage on the BBC and ITV, led to massive crowds of 30,000 plus at each event. The 90's saw the introduction of Group A cars based upon cars currently being sold by Manufacturers. This now includes cars such as Ford Fiesta, Ford Focus, Citroen C4, Renault Clio and Skoda Fabia.

Races take place on circuits that are part-asphalt, part-gravel. Today, the flagship series is the Monster Energy MSA British Rallycross Championship, at which 40 to 50 quick fire races per day provide great entertainment for competitors and spectators. The highlight is the Supercar class, where 550bhp, four-wheel-drive racers go head-to-head. These Supercars are capable of faster acceleration than a Formula 1 car, 0-60mph in less than 2 seconds, which is truly amazing!

John Rook, a Downley resident, was brought up with Motorsport as one of his main hobbies and interests. This hobby started with just being a spectator at events

throughout the UK and Europe, but his main ambition and desire was to compete one day.

In 2008 he started racing in Rallycross which was his lifelong ambition. Having tried his hand at hiring a car he then set about finding a suitable car, which turned out to be a Peugeot 205 GTi in the Stockhatch class. In his first season he came 3rd in the championship, this was followed up by 4th and a 3rd the following 2 seasons.

Mid Way through the 2010 season he bought a Citroen Saxo, knowing that classes were about to change and he needed a car to upgrade. In this car he came 4th in the 2011 championship and spent the winter upgrading the car to 16v spec to race in the 2012 Hot Hatch Championship as part of the MSA Championship across the UK.

A recent appearance on the Top Gear programme racing the 3 presenters has enabled me to raise 80% of my season budget, but am still searching for the remaining 20%. Any companies interested in becoming sponsors of the car, appearing in local and national press, TV coverage and internet coverage should get in touch, packages start from as little as £200 for the season.

*Contact Jrrallyx726@yahoo.co.uk or  
07581 467465*

# LADIES!

**Help us bring digital detection of breast cancer to you. Scannappeal's Principal Patron Cilla Black has launched the charity's £500,000 Appeal for digital breast screening equipment to radically improve diagnosis of early breast cancer.**

She encouraged attendees to support Scannappeal's work and said 'There can't be a woman who doesn't know someone who has been affected by this terrible disease of breast cancer.'

The Bucks Breast Cancer Appeal is to fund digital equipment for the breast screening service at Wycombe Hospital and the mobile unit that tours sites based in the local community, screening women aged from 47-73. Digital images are exceptionally sharp, making diagnosis more accurate, and will mean a quicker examination and lower radiation dose for 23,000 local women each year.



**To support Scannappeal with a donation or to organise your own fundraising activity, telephone 01494 734161 or visit [www.scannappeal.org.uk](http://www.scannappeal.org.uk). Registered charity no. 296291**



## Review - Singing in the Rain

**Singing in the Rain is now showing at the Palace Theatre in London after a sell-out run at Chichester's Festival Theatre.**

My husband and I went to see Singing in the Rain with Downley Theatre Group and what a treat it was! It was an excellent cast especially with Adam Cooper as the leading man. His dancing was excellent also the singing which was so catchy we were all singing too. The water feature was amazing, but we did feel a bit sorry for the people in the first four rows as they also got wet. Everyone enjoyed the show - and it was a light-hearted good feel musical.

*Joan Baker*



# Welcome To Downley!

Since the year 2000 we who have had the privilege of living a long time in Downley, find that there is a new wave of folk moving in. We look forward to getting to know the 'newcomers' and hope they will join us in becoming active members of this thriving community. If you are new to Downley, lets hear from you!



Margaret and Dick Graham moved to Downley from Dorset in the Spring of 2011.

They love it here where they are near their two daughters and a couple of grandchildren, Megan and Josie and where they also have wonderful neighbours. They find that living in Downley is like being in a sweet shop. There is so much to do.

Dick is building a model railway and enjoyed the recent model railway exhibition in High Wycombe, and to be so close to London is wonderful for them both. Within Downley they go to Simply Walk on Mondays, and Margaret enjoys Pilates, Tai Chi and WI. Two charity shops allow her to mess up their tills - Cancer Research in Wycombe and the Iain Rennie Shop in Downley. She is a member of the U3A and the Wycombe Rock Choir, who supported McFly at the Saracens Rugby match at Wembley Stadium in March.

Margaret is the author of twelve novels (two bestsellers) and two writing manuals. She has written plays, including a community play, and still writes articles and short stories. She was until recently a columnist on a writing magazine. She teaches creative writing and acts as a mentor online and in person for aspiring writers.

Latterly she scaled back her novel writing activities to take a role as voluntary administrator of the Yeovil Community Arts Association in Somerset when Council

funding was withdrawn. To raise funds she launched the Yeovil International Literary Prize which is still providing funds for grants and bursaries and is now under the stewardship of one of her ex-students.

The thing she most enjoyed about her writing career was the research, with speaking tours a close second. For instance she visited Australia and fought bush fires and rounded up sheep near Wagga Wagga. She then set off for the Margaret River area south of Perth to research the Group Settlement scheme. From this came the best selling 'Canopy of Silence' and a television documentary. Later she explored Croatia and Bosnia just after the peace settlement and learned (too close for comfort sometimes!) about the knife edge ground level politics. The thing she disliked most about her career was being shut in an office with nothing to distract her from the job in hand.

Margaret is working on a novel after a break of ten years, and continues to write short stories and teach. It is the teaching that she loves, as it brings her into contact with people and she is very proud of her students who seem to be doing very exciting things.

Her latest venture, in tandem with a Bournemouth ex-student, is to create a charity to raise funds for the rehabilitation of wounded soldiers - with the use of creative arts a priority. Dick, as ever, is creating the website.

**Everyone who comes to live in Downley brings their own wealth of experience, culture and talents to add to the rich variety already evident in our community. Let us hear from you in the next issue of this magazine!**

# Cheese Board

**Well that's it. After 17 years of 60 hour weeks I have finally hung up my apron, having sold Roots Delicatessen - but the name lives on under the new owner, Vidya Crawley.**

Vidya has done a fantastic job in refurbishing the shop, you can now relax and enjoy a coffee with a pastry while making your selection from the excellent range of both local and countrywide produce. Vidya's ethos is the same as mine; fine food traditionally produced by artisan producers, but with a local emphasis. I have expressed some concern about the quality of some local produce but Vidya has made a superb selection of really interesting food with an emphasis on environmentally friendly production. I wish LOCAL ROOTS lots of success.

The real enjoyment of owning a small shop is the rapport with customers and the humour; as when a customer managed to cover herself with flour from the bread and I offered a cloth so she could be de-floured. The 4 year old who rushed in, and on smelling the cheeses loudly announced to a shop full of customers 'this place stinks'. These have made shop keeping enjoyable. OK some of you are a pain, like the lady who brought a Brie baguette back as her colleagues had told her the cheese was off - it was a Brie de Meaux that was spot on, unctuous full flavoured and absolutely gorgeous. Then there are those who want to return a cut opened piece of cheese because they bought the wrong one, or the lady who insisted that goats cheese was not a dairy product when what she really wanted was a soya version - I can't bring myself to call it cheese. The one thing that always made me smile was the virtually standard response to the question 'would you like a bag?', 'do you have one?', 'No I just wondered if you wanted

one'. Thanks to our customers who have made it a fulfilling 17 years.

I am not retiring from the food business and will continue importing Artisan foods including the 2011 World champion cheese from the Pays Basque for independent delicatessens and through our retail internet site [Frenchfoodfreaks.co.uk](http://Frenchfoodfreaks.co.uk), while maintaining a passion for traditional British Cheese.

Here are a couple of ideas for the summer:

## **Cheese Board**

Cotherstone a fresh sweet cheese from the Yorkshire Dales

Golden Cross a young goats cheese from Sussex

Barkham Blue a remarkable creamy local blue cheese

Wigmore a locally made Brie style Ewes milk cheese

## **Baked Fig in Bayonne Ham**

Fresh ripe fig wrapped in Bayonne Ham topped with honey and baked.

### **Ingredients For 4 persons**

12 Ripe figs

Three large or six small slices Bayonne Ham  
say about 150gm

12 Tsp of Honey

### **Preparation**

Heat the oven to 180C gas mark 4 (350F)

Cut the Bayonne Ham into strips about 4 cm wide (1 1/2"). Cut the stem end from each fig to just expose the inside. Wrap each fig in a strip of Bayonne ham like a cylinder so the top of the fig has a collar of the ham above it. Fill the collar with honey. Place on a lightly oiled baking tray and bake for 6 to 8 minutes. Serve in groups of three. Some of the honey will inevitably escape the ham collars, pour this back over the figs before serving.

*Have a good summer, Les Root*



[www.frenchfoodfreaks.co.uk](http://www.frenchfoodfreaks.co.uk)

Follow us on facebook



# Downley Village Art Show 2012

**Since announcing plans for a village art show we have benefited from excellent advice and great feedback. The resulting format for the show is set out below - all that's needed now is your creativity.**

We would like the show to be as inclusive as possible and not to inhibit your creativity so there are no set themes for entries. It is open to a wide range of media with categories for adults and juniors.

While there are small cash prizes to be won across media and within categories we would like to reward contributors with further exposure of their work. To that end there will be a publication featuring selected work and a Best of Show exhibition is to be held at the High Wycombe Library Mezzanine Gallery.

## **In more detail:**

You need to select your qualifying category from: Juniors; 4 and under, 5-11 and 12-16. Adults; Beginners, Students and Experienced.

Work is to be entered in the following media groups:

- Drawing, Painting & Crafts
- 3D
- Photography
- Poetry

You will find an Entry Form on the opposite page but more Entry Forms and Full Details will be made available to local schools, clubs and societies or can be requested by email from [info@downley.org](mailto:info@downley.org) or downloaded from [downley.org](http://downley.org).

The deadline for submission of entry forms is 12th June by post to Downley Parish Council, P.O. Box 1091, High Wycombe HP13 5WU or by email to [info@downley.org](mailto:info@downley.org)

Artworks are to be delivered to the Downley Community Centre on 16th June between 10 am and 4.00 pm. A receipt will be provided as will a label to be attached to artworks. All artworks are left your own risk. Glazed work must be framed, please do not use clips that leave exposed glass edges. Prints of original work will be accepted when in a card window mount.

Work will be exhibited over four evenings between 6.30 am and 9.00 pm on the 18th, 19th, 20th and 22nd June in the Oak Rooms of the Community Centre. If entries exceed the space available organisers will have the final decision on the work displayed.

Best of show awards will be announced on Downley Day held on the common on 23rd June. The judges decision is final.



*Downley.org for more details*

ENTRY FORM  
DOWNLEY VILLAGE  
ART SHOW 2012

Name \_\_\_\_\_

Qualifying Category

Junior

4 and under     5 - 11     12 - 16

Adult

Beginner     Student     Experienced

Chosen Media

Drawing, Painting & Crafts     3D     Photography     Poetry

Number of entries    \_\_\_\_\_    \_\_\_\_\_    \_\_\_\_\_    \_\_\_\_\_

**Contact Details**

Address \_\_\_\_\_  
\_\_\_\_\_

Telephone Number \_\_\_\_\_

Email \_\_\_\_\_

Please return this entry form to:

Art Show, Downley Parish Council, P.O. Box 1091, High Wycombe HP13 5WU or email  
info@downley.org

Be sure you read and understand the full details outlining rules and guidelines before submitting your entry. If you did not receive a copy with this entry form you can download one at downley.org or request one from info@downley.org

**Enjoy creating your artworks and we look forward to seeing finished pieces**

# Get Creative and be a Winner!

**The Downley Village Arts Show is just a few weeks away but there's still time to get your entries in. For all you budding poets out there, local author and creative writing teacher Maggie Womersley has some tips for getting inspired and finding the right words to make your poem the star of the show.**

Judges will be looking for poems that get their message across with originality and flair. Why not try these exercises to get your creative juices flowing:

- Get out and about – if inspiration isn't happening at home then go for a long walk or a bus ride. Listen in to other peoples' conversations –the rhythm of their words, the way they express themselves. Could you make a poem out of something you've overheard? Take a notebook and pencil with you wherever you go!
- Look through a newspaper and find a headline that catches your eye – make it the title of your poem and see where the words take you.
- Think back to a place you visited as a child which made a strong impression you – a grandparent's house, a holiday destination, a hospital or parents' workplace – now write a poem about it from a child's point of view.
- Visit a museum or historical building and find an object that inspires you. Write a poem in which you imagine that object being used by its original owner.
- Play around with tenses and point of view – if you've written a poem in the 3rd person using the past tense, try switching to the first person and present tense – how does this change your poem's tone?

- A lot of people write about big issues – getting old, the death of a loved one, falling in love – try taking a different viewpoint on these big themes to give your poem a fresh twist – the marriage councilor's lament, the gravedigger's ode, or the speed-dater's sonnet.

And remember, a poem doesn't have to rhyme, but it's fun when they do! Think about each word you use, and test it out by reading your poem aloud – can you give your poem a particular rhythm – fast, slow, dreamy, humorous - that reflects its subject matter? How does the language of your poem add to its meaning? Are you going to write in verses or freeform? Whatever you choose to write about, Good Luck! The deadline for entries is Saturday 12th June, so get scribbling.

**Maggie will be running a series of Creative writing workshops this Autumn in the Downley area. For more information and to register an interest, email her at [meltdownmaggie@aol.com](mailto:meltdownmaggie@aol.com)**



# Can You See What It Is Yet?

**Don Murray has a love of working with wood and particularly of hand turning. No presetting of state of the art lathes here, just a range of clean sharp chisels and a very steady experienced hand.**



Don has made a start on his contribution to the Downley Art Show and he is taking his inspiration from The 2012 London Olympics. Armed with that information you are probably able to make a reasonable



guess at his subject matter from the work in progress photos. These are early days though and even Don hasn't fully resolved his vision for the final piece. Whether to add further turning embellishments, what stains to use and the possibility of featuring gold leaf.

Don has many years of turning experience, contributing to craft fairs and working on private commissions. A good number of Downley household will have at least one of Don's pieces proudly on display.

He is often on the look out for good sources of timber. When discovered they may be set aside for a couple of years before considered suitable for turning or right for a particular job, as have both the Maple and Ebony used in his tribute to the Olympics.

This year is a good one for inspiration with the Queen's Jubilee, Dickens' Bicentennial, World Shakespeare Festival, European Football Championship and commemorations of the sinking of the Titanic. Any of these might be springboards for your creativity as might a gentle walk on Downley Common where you might find a piece of wood...

# J. Heartycough's Horticultural Hints

**Wal, me old mates, now it's summer...so they tell me. But I thought we'd had it back in April, daft I reckon, then it snowed, and a bit of rain, but we've got a hosepipe ban now.....what! They must be joking. I bet all them golf courses will carry on looking green...you watch!**

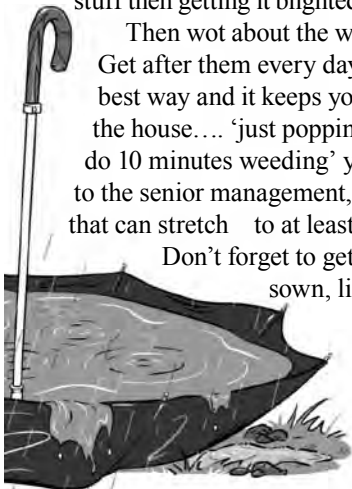
Anyway round here our water comes out of the chalk, so when you wash the car or water the garden it soaks back in, so you're not getting rid of it, not from where I'm coming from. Up at the plot some of us have our water collecting systems, architect designed...not! But they work, have a look next time you brave the top end of the common.

So what about an H H or two? Wal, yor spuds will be up soon, or now even, so maybe earth 'em up...a waste of time I reckon, you should have planted them nice and deep, but watch out for frosts...the farmers grow them in ridges so it makes it easy for the harvesting machines. And watch out for the dreaded blight, and on your tommy toes too. I use that blue stuff they use in France on the grapes, some sort of copperry stuff, I get it via the inter web, it's called bordo mixture or summat like that, don't just waste all your time growing the stuff then getting it blighted!

Then wot about the weeds?

Get after them every day, it's the best way and it keeps you out of the house.... 'just popping out to do 10 minutes weeding' you say to the senior management, I reckon that can stretch to at least an hour.

Don't forget to get late peas sown, like I told



you before, plant out yor brussels and kale and stuff., and net yor soft fruit to keep the birds off.

And now a question for you clever dicks... how does a seed know to grow upwards when it's in the dark? Does it have gravity sensors? If you plant a seed upside down will it grow downwards? And do runner beans always go the same way round the canes, and what do they do at the equator? Answers please on a five pound note, (I've reduced this from last time, no one replied then... how tight can you all get?).

Finally you will note I haven't mentioned Nappel...but just you wait till next time... mind you I had a few words with a couple of Nappelites the other week, trying to be friendly they were... we shall see, I don't count on it! Oh, I'll try to remember Flower Hints next time, my old lady thinks I only know about veg!

Keep your hands a dirtying, 'dirty hands clean money' as my old dad used to say!

Bye for now

*J.H*

*sent from my iSpade.*

P.S.

Wal, I don't know, as soon as I have a go about the drought, it just pours down! The plot is a bog, freezing cold, anything that's come up is giving up. I blame it on Mr Cameron and his mates, mucking about with the economy, and the tanker drivers, no one's driving now, too much money for the petrol, no global whatsit, so we're back to the good old days, when winter was winter, spring was always cold and wet, bluebells bloomed in June, and if you got tommy toes to ripen outside up the plot it was a miracle.

# The paper-making fortune and tee-total publicans

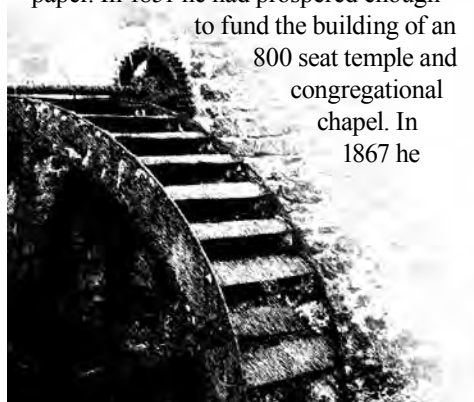
## Downley Ancestors part 2

**In the last episode, I mentioned my Joynson ancestry and the links to Downley, but one did move away to make his fortune. His name was William Joynson.**

He was born in what was then West Wycombe Parish in 1802 and was married for the first time in 1823 to a local girl named Sarah Cubbidge. Two years later Sarah died and William was married again in 1826 to Ann Catherine Joynson, a distant cousin.

Around the time of his marriages, William had moved to Kent where he took over a paper mill in Snodland. Paper making was a thriving local industry here, in and around Wycombe and it relied on the mills along the river Wye. The last paper mills have now disappeared from Wycombe, the last two being Glory Mill in Wooburn and Wycombe Marsh Paper Mills. Rye Mill, now the name of a VW garage was also a paper mill. No doubt William would have been set up in business by his comparatively wealthy family and learned the trade in Wycombe before moving to Kent.

By 1833 he had moved to St Mary Cray where he took over two small hand mills and mechanised them to produce high quality paper. In 1851 he had prospered enough to fund the building of an 800 seat temple and congregational chapel. In 1867 he



established a school and enclosed and devoted to the use of the inhabitants of St Mary Cray a 10 acre field. Not surprisingly he lived in the biggest house in the village, The Rookery, now sadly demolished. William Joynson is given credit as the inventor of the machine watermark and by the time of his death in 1874 he employed between 600 and 700 workers. The paper mills were passed down through William's family, eventually being sold to Wiggins Teape in 1931.

Another interesting if sad tale, one of William's Grandsons was drowned in the river Seine in Paris aged 16, presumably doing the 'grand tour'. He is buried in the family vault in West Wycombe churchyard along with many other members of his family including his Grandfather William, founder of the family paper business, all returning to their roots to be laid to rest.

Now how about tee-total publicans? As far back as I can remember my family only ever touched the 'hard stuff' for medicinal purposes! Looking back into family history I find my Grandmother being brought up in two pubs, The Wheel in Naphill and the Red Cross Knight in Frogmoor. Her Uncles between them were the licensees of 'The Roundabout', 'The Iron Duke' and the 'Admirals All' in High Wycombe; a pub in Tyler's Green and 'The Pheasant' in Chinnor Hill. I have even found an Aunt of hers listed as a publican in Princes Risborough in 1881, an unusual occupation for a Victorian woman I would have thought.

Almost everyone else on my family tree is a chair maker, not surprisingly.

For now, best wishes

*Paul Turner  
District Councillor for Downley & Plomer Hill*

# Poets Corner

## The Poem What I Wrote

*Roger Davies*

**In the Morecambe and Wise show on television, Ernie Wise used to refer to the 'Play What I wrote'. In 1993 Ernie had a stroke and another one in 1995, but he survived both of these until he died in 1999 after several heart attacks. I only learned about his strokes when I looked him up on Google, having in mind his 'Play What I Wrote' catch-phrase, so perhaps it might be fitting for me to call my recollections of my third stroke 'The Poem What I Wrote'!**

I think I've had a TIA, my left side's feeling weak  
And when I try to say something I find I cannot speak!  
Make a cup of tea while thinking what to do,  
Ring 999 then wait indoors for the paramedic crew.

They arrive and whisk me off to Wycombe A & E,  
Take me to a cubicle where they start the third degree.  
They do some tests and come and go, deciding on a plan  
And later on that evening I'm taken for a scan.

The stroke ward's full but nonetheless I need to have a bed,  
And so a berth is found for me in the CCU instead.  
Ten hours now have slipped away since my initial fright.  
I have some food and a cup of tea and settle for the night.

The next day will be Saturday so the weekend shifts take charge.  
My appetite is very good so I hope the plates are large!  
Waiting for resumption of the weekday hours routine,  
Bought a Sunday Telegraph, threw away the magazine!

Monday morning transfer to a special acute stroke bay,  
Visits by consultant's team and a physio, busy day.  
I didn't like the Registrar, some sort of foreign bloke,  
But he did confirm that what I'd had was a full ischaemic stroke.

The F1 doctor, Carly, was a lot more help to me,  
Much more sympathetic but without appearing twee.  
She arranged for further tests, X-rays and ultra-sound,  
A reassuring manner but with both feet on the ground.

The next day and some physio, to reprogramme my brain  
And help to make my left arm and leg start working once again.  
An OT came to find out how I'd cope with things back home,  
Especially as I think myself a would-be gastronome!

I'm much too young to want, or need, the joys of meals on wheels  
And I doubt if I would last for long on Tesco's special deals.  
I like to cook good wholesome food, helped down with cheap red wine,  
Beef casserole with good fresh veg is how I'd rather dine.

Discharged a few days later with minimal advice,  
I'm left alone to get on with it, it doesn't feel that nice.  
The NHS has limits so now it's up to us  
To make the most of what we've got, not kicking up a fuss.

The voluntary sector is there for those in need,  
Not in ways financial but more with word and deed.  
Sharing things we've gone through with others in the know,  
Regaining our self confidence, which sometimes can be slow.

Stroke support's available, for example, Different Strokes,  
To cater for the social needs of a variety of folks.  
Carers or survivors can benefit from their peers,  
To know they're not left on their own can dry those lonely tears.

I'm thankful to have got away with three strokes in a row  
And what I've done to have such luck I'm sure I'll never know.  
But what's done is done, what's said is said, I'm such a lucky bloke  
But make no mistake about it .....A stroke is not a joke!



## **Caring and Sharing**

*By Edna Bavister*



If there was more care in the world  
There would be no room for hate.  
I do not know who said that  
But the sentiment is great.  
So come and meet some people  
Who do care quite a lot  
Every Monday morning at the Coffee Stop.  
It costs so very little  
For a sandwich and a tea  
But most importantly of all  
The friendship here is free.

frank charlo R.I.B.A  
chartered architect



Charlo Architects are a young, innovative and progressive company with expertise in extensions, conversion, restoration and new build.

We offer a full range of professional Architectural Services from planning to completion, tailored to each individual clients needs.

If you have a project in mind we would be delighted to meet and discuss it with you.

arb RIBA #

t 01494 462894 m 07712010882 e frank@charlo-architects.co.uk

[www.charlo-architects.co.uk](http://www.charlo-architects.co.uk)

31 selwood way, downley, buckinghamshire hp13 5xr

ihd-solutions.com

iain@ihd-solutions.com  
07932 120 660

## Affordable professional webdesign

Specialists in Small business brochure sites

We can supply everything you need to get you on the web and noticed - including:

- ✓ Graphic design
- ✓ Search engine optimisation
- ✓ e-commerce
- ✓ Marketing advice
- ✓ Web Hosting

Now based in Downley, call or email iain for a chat today  
[www.ihd-solutions.com](http://www.ihd-solutions.com)

# YOUR LOCAL

REGISTERED STOCKISTS AND INSTALLERS OF

## GARAGE DOORS & REMOTE OPERATORS

- QUALITY DOORS ALL SIZES
- MADE TO MEASURE
- SECURITY LOCKS & SHUTTERS
- REMOTE CONTROL DOORS
- SUPPLY - FIT
- SPARES - REPAIRS
- FULLY GUARANTEED



**LOCAL RESIDENTS -10% DISCOUNT  
ON STOCKED DOORS**



REGISTERED INSTALLERS  
HORMANN / GARADOR / CARDALE / WESSEX / HENDERSON  
RUNDUM / SILVELOX / NOVOFERM

**CALL FOR A FREE ESTIMATE**

**01494 539339 / 01628 488070**

MANY WORKING DOORS & OPERATORS ON DISPLAY AT:  
SHOWROOM, PERTH HOUSE, GRAFTON STREET, HIGH WYCOMBE, HP12 3AJ

**Altea**  
**Downley Beauty & Holistic Centre**  
High Street, Downley  
FOR ALL YOUR BEAUTY & HOLISTIC TREATMENTS

MANICURES, PEDICURES, GEL NAILS, ACRYLICS

**CELEBRITY ENDORSED HEAVEN LUXURY FACIALS  
& BODY TREATMENTS USING HEAVEN ORGANIC PRODUCTS**

AROMATHERAPY, HOT STONE, THAI, SWEDISH MASSAGE  
WAXING, TINTING, SPRAY TANS  
REFLEXOLOGY, HOPI EARS CANDLES,  
INDIAN HEAD MASSAGE  
EYELASH EXTENSIONS & MAKEUP

**\*\*\*\*\*HALF PRICE TREATMENTS\*\*\*\*\***

**ON DOWNLEY DAY**

**SATURDAY 23<sup>rd</sup> JUNE**

**BOOKING & PREPAYMENT REQUIRED**

(Not available with any other offer or concession)

**\*\*NEW AT ALTEA\*\***

ACRYLIC NAILS AVAILABLE ON TUESDAYS  
HEAVEN BEE VENOM EYE FACIALS (BOTOX ALTERNATIVE)

**ALSO:**

NUTRITIONAL ADVICE & SUPPORT  
COUNSELLING  
HYPNOTHERAPY  
ACUPUNCTURE

**TEL 01494 528285**

**[www.alteadownley.co.uk](http://www.alteadownley.co.uk)**

THANK YOU FOR SUPPORTING YOUR LOCAL BUSINESSES

# Keeping It Clean

Domestic cleaning, Ironing and laundry

Are you looking for reliable cleaners?

We are offering our assistance in your neighbourhood and would be happy to help with your cleaning and laundry needs, we can provide references if required.

- One off cleans
- Spring cleans
- Elderly discount
- Office cleaning

Call us 07563638587



## Are You Sitting Comfortably?

Antique, Modern & Traditional

Re-upholstery & Repairs

Wide Range of Fabrics

### **Alternatively:-**

If your worried about keeping your sofa clean with kids and pets around? Why not consider loose covers and 'Re-cycle your Old Sofa with a New Lease of Life.

*Ring for a FREE estimate  
and give your sofa a  
'New Lease of Life'  
City & Guilds, Est. over 30 years*



Ring: Brian or Kevin

01494 638004

07966 108516

01296 670385



# THE PAINTED KITCHEN COMPANY

*Beautiful kitchens hand painted*

**We have the perfect recipe for creating a hot new look for your kitchen this year!**

With so much emphasis currently on saving money, this could be the perfect time to refurbish an existing kitchen.

We will repaint your units, add new worktops, replace appliances (we are an approved Neff supplier), remove existing wall tiling, apply a fresh coat of emulsion to the walls and even install new flooring.

*Before After*



**Don't put off that much needed makeover and call 01494-718782 or email [sales@thepaintedkitchencompany.co.uk](mailto:sales@thepaintedkitchencompany.co.uk)  
See more examples at [www.thepaintedkitchencompany.co.uk](http://www.thepaintedkitchencompany.co.uk)**

# Body & Soul

01494  
440759

- Gel nails
- Manicures
- Pedicures
- Facials
- Massages
- Eyelash extensions
- Party eyes
- Waxing
- Permanent hair removal
- Sunbed
- Body treatments
- Package deals
- Gift certificates

Plus everything else  
you'd expect from a  
professional salon

Fully automated booth uses  
exclusive patented Microcore  
technology giving incredible,  
complete and even coverage to  
deliver the ultimate self tan



AUTOMATED SPRAY BOOTH

*That So*  
SUN MAKEUP

[www.bandsbeauty.com](http://www.bandsbeauty.com)

3 Cross court, Plomer Green Avenue, Downley, High Wycombe. HP15 5UW

# Corbel Builders

YOUR QUALITY LOCAL BUILDER  
FOR

- EXTENSIONS
- LOFT CONVERSIONS
- GENERAL BUILDING
- BRICKWORK
- 

LOCAL  
REFERANCES  
AVAILABLE

CONTACT MICK WEBB  
TELEPHONE 01494 534479

1 FORD WAY DOWNLEY HIGH WYCOMBE BUCKS. HP13 5XW

## The Window Doctor

CARE & REPAIR FOR ALL YOUR  
UPVC & ALUMINIUM WINDOW  
& DOOR PROBLEMS



- Replacement of broken down sealed units  
- misting up inside glass
- New handles, hinges and door locks
- Replacement of patio door wheels
- Adjust front & back doors that do not shut properly
- New security handles with keys
- New door panels and cat flaps
- New Georgian style or leaded style sealed units
- All insurance work • Burglary damage • Servicing

PLUS INSTALLATIONS OF NEW UPVC WINDOWS & DOORS

Call us for a no obligation survey and Quotation.

**No call out charge**

Friendly Family Established Business

**Cowling & Co.**

**Mobile: 07860 435742**

**Tel/Fax: 01494 483567**

email: [windowdoctor@jcowling.plus.com](mailto>windowdoctor@jcowling.plus.com)

[www.windowdoctor.co.uk](http://www.windowdoctor.co.uk)

# D & P HEATING

Gas Safe registration No. 132 888  
Gas Heating, Servicing and Repair  
Your Local Gas Service Team

*Dave Price. Downley 01494 527631 or 07802 621263*

*George Bennett. Hazlemere 01494 715230 or 07721 513112*

**FREE Quotes. No Callout Charge**



Shop online

[www.moderncharm.co.uk](http://www.moderncharm.co.uk)

*Modern Charm*  
Home & Gift

We are an online home and gift boutique based in Downley. Our aim is to provide our customers with a unique yet affordable alternative to the high street.

To receive **FREE delivery** in Downley, enter code **DOWNDEL**

**Party time**

Host a party at home or an event at work and receive 10% commission.



# Hammond Construction

Building firm foundations

**For all your Home Improvement needs:-**

Extensions  
House Refurbs  
Kitchen Fitters  
Bathroom Fitters  
Plumbing  
Electrical (Part P)  
Carpentry

General Repairs  
Painting  
Decorating  
Windows & Doors  
Guttering  
Gardens/Patios  
Summerhouses

*"Hammond Construction has always been prompt, reliable, and their standard of work is exemplary" Parish Council*  
*"impressed with the high standard of workmanship and the way you project managed our conversion"*  
*References on Request.*

Call us NOW for your free quotation.  
**01494 483924 or 07904 336098**

Use the logos:



[www.hammond-construction.co.uk](http://www.hammond-construction.co.uk)



# The Downley After School Club Holiday Club

We offer an inclusive holiday club for children aged 4-11

**Half term: Wednesday 6th—Friday 8th June 2012**

**Opening hours: 8:00am — 6:00pm**

(A toast/cereal breakfast will be given 08:00-08:30. Drinks will be available throughout the day, a snack will be provided in the morning and in the afternoon, please bring a packed lunch)

**Half Term Introductory Session Fees:**

**Full Day: £22 (8am-6pm)**

**School Hours: £15 (9am-3pm)**

**Half Day: £12 (8am-1pm or 1pm-6pm)**

**Same session sibling discount of 10%**

**Places must be booked & paid for in advance**

**A selection of activities will be held throughout the day**

**Taking bookings now for the summer holidays:  
23rd July—17th August 2012**

**To register please contact Denia, our Club Manager,  
at the Club or call 07905 689 762**

**or download a registration form from our website**

Please note that the Holiday Club is run independently of the school

For any further information please feel free to contact us :

By phone: 07905 689 762

Via our website: [www.downleyasc.co.uk](http://www.downleyasc.co.uk)

Or by email: [info@downleyasc.co.uk](mailto:info@downleyasc.co.uk)

The Downley After School Club, Faulkner Way, Downley, HP13 5AL

Ofsted Registration Number EY419849  
Registered Charity Number 1115149

Supported by  
Buckinghamshire County Council





# JH Austin & Son

## Established 1972

**Painting & Decorating**  
Interior & Exterior work  
CHAS Registered &  
City & Guilds Qualified

Tel: 01494 464366

Mob: 07738 906674

Email: [noeljohnaustin@hotmail.co.uk](mailto:noeljohnaustin@hotmail.co.uk)

We Now Recharge & Service  
Air conditioning

HIGH CLASS  
SERVICING & REPAIRS  
....AT VERY COMPETITIVE PRICES

# M & J MOTORS



- All makes of cars
- Fault finding diagnostics
- MOT preparation
- Welding etc

**FREE COLLECTION & RETURN  
COURTESY CAR AVAILABLE**

*We are seldom beaten for value or  
friendliness, so for all your motoring  
needs call Pask or Paul now*

**Tel. 01494 521924**  
**Mob. 07957 860832**

The Dairy, Downley Common,  
High Wycombe  
HP13 5YN

# 11+ TUITION



*Highly successful courses designed specifically to maximise your child's potential*

*Courses tutored by John Callow B.Ed (Hons), former Deputy Head Teacher with 30 years practical experience of guiding children through the 11+*

**SMALL CLASSES—  
EXCELLENT RESULTS**

**ALSO TAKING YEAR 4 ENQUIRIES**

**TEL 01494 445969**

## KMG

### Building Contractors

- Extensions
- New Builds
- Brickwork & Blockwork Specialists
- Patio's / Paving / Landscaping
- Block Paving / Driveways
- Groundwork
- All General Building work undertaken

For a FREE no obligation quotation, please contact Matthew Flint  
T. 01494 437221 M. 07818 081775 E. flint478@btinternet.com  
8 Bowler Lea, Downley, High Wycombe, Bucks HP13 5UD

Professional, Competitive, Reliable Builders. Local references available upon request.

# JR-Travel Private Hire



We can take you in comfort to almost any destination you require including Airports, seaports, theatre trips and any other special occasions.

Fully licensed drivers.

National travel tokens accepted.

Family run business based in Downley.

For a competitive quote please give us a call.

**Tel: 01494 63 95 63**

**Mobile: 07762 886208**

Website: [www.jr-travel.co.uk](http://www.jr-travel.co.uk)  
Email: [enquiries@jr-travel.co.uk](mailto:enquiries@jr-travel.co.uk)

# PH DECORATING



FOR ALL YOUR PAINTING AND DECORATING NEEDS

CONTACT PAUL ON:-

01494 530643

07776 217233

**Quality, friendly, reliable and competitive  
every time**



# MAGIC CARPETS

- Carpets & Vinyls
- Supplied & Fitted
- We bring samples to your door

**T: 01494 484977**

**M: 07970 042903**

**magic.carpets@btinternet.com**

**EXPERIENCED**

**SEWING MACHINIST**

FOR ALL YOUR REQUIREMENTS

SOFT FURNISHINGS,  
REPAIRS/CLOTHING ALTERATIONS,  
UPHOLSTERY ETC.



**PLEASE CALL "SUE"**

**ON 01494 638511**



**"New look"**

Carpet & Upholstery Cleaning

*Local Independently Owned & Operated, With 10 Years Experience*

**No Job to Big or Small**

**Carpets • Rugs • Upholstery  
Leather • Curtains**

*Rapid Drying Times, Spot & Stain Removal, Stain Protection,  
Dust Mite removal & Control, Odour Removal*

**Deep Clean Hot Water Extraction Method,  
the Most Thorough their is (or Dry Clean) With No  
Harsh Chemicals, No Shrinkage, No Colour Run,  
No Dirt Attracting Residues Guaranteed**

*Fully Insured Local Professional Service with Sensible Prices,  
References & Guarantees Available*

**Call Steve: 07940 756 491 or 01494 521 364**

Email: [newlookcleaning@virginmedia.com](mailto:newlookcleaning@virginmedia.com)

**Go on, Give Your Home a "New look"**  
[www.newlookcleaning.vpweb.co.uk](http://www.newlookcleaning.vpweb.co.uk)

*"Tree Tops" 43 Plomer Hill, Downley, High Wycombe, Bucks HP13 5NB*

# The Reflex Zone

Reflexology for health and wellbeing

- \*Member of the Association of Reflexologists\*
- \*Locally based, calm and relaxed treatment room\*
- \*Maternity Reflexology also covered\*

Tel: Jo 07956 309099

[www.thereflexzone.co.uk](http://www.thereflexzone.co.uk)



If you have any questions, please don't hesitate to call.

Reflexology is a safe, gentle complementary therapy that boosts the body's healing systems & helps combat stress.



## **Carol McCullough Soft Furnishings**

Quality, bespoke curtains and Roman blinds  
Created from your own choice of fabric

Free estimates and competitive rates

Please call 01494 440758  
Mobile 07789 191040

# Michael Day Lawncare & Landscaping

- From small lawns right up to 10 acres
- Hedges Cut / Planted
- Trees Pruned / Planted • Leaves Removed
- Complete Lawn Treatment • Lawns Mowed

*Member of UK LawnCare*

*Member of the Institute of Groundsmanship*

**Contact Michael Day**

**Tel: 01296 581116 Mobile: 0790 5556061**

**michaeldaylawns@hotmail.com**

## MTS

WINDOW CLEANING

Windows, Fascias, Gutter and Conseratory Roof Cleaning

***Regular and one-off service available***

Reliable. Friendly and insured family business

**Call or email for a FREE quote**

**Tomasz Slota**

**01494 463070 / 07903 520581**

**email: mtswinclean@hotmail.com**

**116 Garrats Way, High Wycombe, Bucks HP13 5XZ**

# P.K. STROY

## QUALITY BUILDER

- Extensions
- Patios
- Drives
- Brickwork
- Block Paving
- UPVC Windows/Doors
- Decorating Service
- Plastering

T. 01494 442886 M. 07876 254131

E. [peter.stroy@btinternet.com](mailto:peter.stroy@btinternet.com)

11 Green Leys, Downley, High Wycombe, Bucks. HP13 5UH

## PETER C CORK

**Plumbing • Bathroom Specialist • Ceramic Tiling**

GENERAL PLUMBING INSTALLATIONS & REPAIRS

FULL BATHROOM DESIGN & INSTALLATION INC TILING

EN SUITE & CLOAKROOM CONVERSIONS

WET ROOMS

POWER SHOWERS

WATER SOFTENERS SUPPLIED & FITTED

FULLY INSURED

ALL WORK GUARANTEED

ESTABLISHED OVER 25 YEARS

**CALL FOR A FREE COMPETITIVE ESTIMATE**

**Tel/Fax 01494 443581 Mobile 07770 694131**

**1 White Close High Wycombe Bucks HP13 5NG**

# Tutor High

Wycombe

Resident in Downley, I am a science graduate, a qualified teacher and a mum.

- 11 + Tutoring.
- Literacy and numeracy help for all ages.
- KS3/4 Physics, Chemistry and Biology.
- KS5 Biology.

To discuss your needs please call me;

**Jill: 01494 510077**

**07703 574610**

**jillburrell@rocketmail.com**

- FREE**
- **Lager**  
(orders over £10)
  - **Bottle of Wine**  
(orders over £30)

**10% DISCOUNT**  
on collections over £10.00

**FREE DELIVERY  
WITHIN**

Bledlow Ridge, Booker, Bryant Bottom,  
Cadmore End, Cressex, Downley,  
Flackwell Heath, Hazelmere,  
High Wycombe, Holmer Green,  
Hughenden Valley, Kingshill, Lacey Green,  
Lane End, Loudwater, Marlow, Micklefield,  
Naphill, Penn, Piddington, Prestwood,  
Princes Risborough, Radnage, Sands,  
Saunderton, Stokenchurch, Studley Green,  
Totteridge, Tylers Green, Walters Ash,  
West Wycombe, Widmer End,  
Woburn Green, Wycombe Marsh

**Buy 1 Get 1 FREE  
or Buy 2 Get 2 FREE**  
Sunday to Thursday

If you would prefer to have this offer  
delivered, please add £3.00  
For Duck and King Prawn, add £3.00  
Valid from 1st June - 30th September  
Terms & conditions apply

Go to [www.ranasanatandoori.co.uk](http://www.ranasanatandoori.co.uk)  
for vouchers and terms & conditions

*We only use quality plastic  
containers tightly sealed to ensure  
no leakages and spillages.*

# RANASANA

## Tandoori



Classic  
Bangladeshi  
& Indian  
Takeaway

**Tel : 01494 511 101**  
Tel/Fax : 01494 524 227

### FREE HOME DELIVERY

Up to 8 miles  
(£10 minimum order)

5.00pm - 11.00pm  
Open 7 Days a Week  
(Including Bank Holidays)

7 Cross Court  
Plomer Green Avenue  
Downley  
High Wycombe  
HP13 5UW

Or visit :  
[www.ranasanatandoori.co.uk](http://www.ranasanatandoori.co.uk)

**All Major Credit Cards Accepted**

# Revive!

setting new standards in mobile car care



## Your car paintwork expertly repaired in under 2 hours!



- *we come to you, home or office, when it suits you*
- *expert technicians with the very latest mobile bodyshop technology*

Undetectable, durable repairs:

- *wing mirrors • bumper scuffs and splits*
- *key vandal scratches • alloy wheel scrapes*
- The latest bodyshop systems and quality at a fraction of the cost
- Professional, courteous service fully guaranteed
- Rapid, punctual response

## DON'T REPLACE IT - REVIVE IT!

Call Byron on:-

Freephone: 0800 316 6027 Mobile: 07779 325 201

Revive! (High Wycombe)

7 Merrydown, Downley, High Wycombe, Bucks HP13 5NQ

[www.revive-uk.com](http://www.revive-uk.com) Email: [byron.lindsay@revive-uk.com](mailto:byron.lindsay@revive-uk.com)



**10% off**  
with this flyer



THE  
PROFESSIONAL  
BUILDING  
COMPANY..

**Extensions • Renovations • Loft Conversions  
Driveways • Fencing • Hard Landscaping & Patios**

*Fast Friendly Service - Free Estimates Given  
Fully Insured - References Available*

**Jody Smith**

59 Grays Lane, Downley, High Wycombe, Bucks. HP13 5UG

**Tel: (Home) 01494 451861 / (Mob) 07979 648239**

**M.D. Garden Services**



**Gardener**

Pruning • Shrubs and Flower Borders

Fruit and Vegetable Pots • Hedges

Lawn Care • Indoor Plants



**Horticultural Engineer**

SERVICE • REPAIR • SHARPENING

Lawn Mowers • Garden Tractors

Strimmers • Blowers • Shears • Chainsaws



**NO OBLIGATION QUOTES**

**M. L. Dunn**

Home: 01494 865834

Mobile: 07795 158292

*DJ Coles Property Services*

**Professional High Standard**

*Established in 1999*

- Interior & Exterior Decorating
- Paper Hanging
- Coving
- Carpentry & Kitchen Installations
- Laminate & Wood Flooring
- Door Hanging
- Fencing & Decking
- Loft Insulation & Boarding
- Gutters, Fascias & Soffits
- General Property Maintenance & Improvements

**Competitive Rates**

**Tel: 01494 715690 / 07747 783015**

# Tree Surgery, Fencing, Gates, Decking etc All to a high standard

**Woodland Management**

**By Qualified Forester**

Fully qualified and insured

- Free quotes
- Free Advice
- Free Ideas



**20 years experience**

**Call Tim on:-**

**01844 275874 or  
07906 168547**

## **SUTTONS**

**PROPERTY MAINTENANCE**

### **ALL GENERAL MAINTENANCE WORKS CARRIED OUT**

No Job Too Small From A Dripping Tap To a Full Size Patio

PATIO SPECIALISTS  
WALL & FLOOR TILING  
PAINTING & DECORATING  
PLUMBING  
FENCING  
BLOCKED DRAINS / GUTTERS CLEARED

Call Trevor For Free No Obligation Estimate - No Call Out Fee

**Tel: 1494 638953**

**Mobile: 07754 948743**

**Email: [suttonsproperty@aol.com](mailto:suttonsproperty@aol.com)**

# WORKMANS AIRCON Ltd

For all your air-conditioning needs within the commercial & domestic sector.

We Supply Heating & Cooling all year round.

Please visit us @ [www.airconworx.co.uk](http://www.airconworx.co.uk) for full details

*Or contact Paul on*

**07966-772646 / 01494-521503**

Email: [paul@airconworx.co.uk](mailto:paul@airconworx.co.uk) or [workmansaircon@btinternet.com](mailto:workmansaircon@btinternet.com)

Sales, Design, Maintenance, Installation, Service.

**Domestic Sector:** Conservatories, Bedrooms, living Areas, Kitchens, home Office, Wine Cellars, Basements, Top up Service Available for Car Aircon.

**Commercial Sector:** Offices, Information Technology Suites, Pubs, Shops, Cellar Coolers, Cold Rooms, Freezer Rooms, Stand Alone Fridges & Freezers, Display cabinets, Bottle Coolers, Ventilation, Decommissioning Works and removal of old plant, Mechanical Services,

**All Work Guaranteed**

**All Budgets & Manufactures Catered For.**

All equipment fitted will carry an energy label 'A' or 'B'  
saving on running costs

*Air Conditioning & Refrigeration/Mechanical Services*

## SPIRIT HAIR AT THE BRITISH HAIRDRESSING BUSINESS AWARDS



Above: Lauren and Mikaela with Gok at the British Hairdressing Awards.

Left: Nicky Clark with the team from Spirit celebrating at the British Hairdressing Business Awards.

### Spirit Hair Company "three times nominees" at the British Hairdressing Business Awards 2009/10/11. Would like to offer.

Consultation, cut, wash, blow-dry, in salon treatment

**All for an amazing Offer of £35.00**

Offer available with Katie and Kelly B until end of March 2012

**Or 1/2 head foil high-lights £30.00**

(must be booked with full price cut and blowdry)

Offer available with Lucy and Vicky until end of March 2012

We are open late nights on Monday to Thursday until 9.00pm

Free parking, great drinks menu and offer re-booking discounts



S P I R I T

Kathleen Cottage  
High Street, Downley  
High Wycombe  
Buckinghamshire HP13 5XJ

Tel: 01494 440132

[www.spirithaircompany.com](http://www.spirithaircompany.com)

Offers Extended  
to the  
END OF JUNE



Telephone for appointments or call in for a consultation. (No obligations)

Please bring voucher to receive your offer. Terms and conditions apply. The Spirit Team look forward to seeing you very soon.

# DO YOU NEED A DOMESTIC GODDESS TO COME AND WAVE A WAND ?



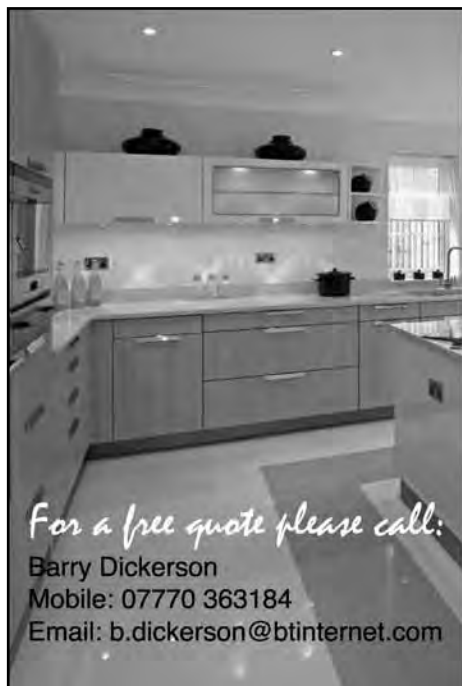
## Professional & Reliable House Cleaner

- \* All General Cleaning Chores - Spring Clean / Party Clean
- \* End of Tenancy Clean & Dress for Re-Let
- \* After Builders Clean
- \* Wardrobe Tidy & Freshen-Up
- \* Washing & Ironing
- \* Dog Sitting in your home / Dog Walking
- \* Garden watering whilst you're on Holiday



For more info or book an Appointment  
Call Melanie on 07779 236 143

**Introductory Offers available  
And Friend Referral Bonus**



*For a free quote please call:*

Barry Dickerson  
Mobile: 07770 363184  
Email: b.dickerson@btinternet.com

## COMPLETE

Bathroom & Kitchen  
Installation

- *Expert Advice*
- *Installation*
- *Plumbing*
- *General Building*
- *Wall & Floor Tiling*
- *Hardwood and Laminate Floors*
- *Decorating*
- *Service with a smile*

**A GREAT OPPORTUNITY  
TO PROMOTE YOUR BUSINESS OR SERVICE LOCALLY**

THE DOWNLEY VILLAGE ART SHOW 2012

Will be producing a Best of Show publication in a similar format to the  
Downley Village News.

This is your chance to both promote your business and show your  
support for a high profile village event.



Register your interest at:  
**[adverts@downley.org](mailto:adverts@downley.org)**

**WeightWatchers**

**COME AND JOIN YOUR LOCAL  
FRIENDLY  
WEIGHT WATCHERS MEETING IN  
DOWNLEY:**

**THE DISRAELI  
SCHOOL**

**(IN CHILDRENS CENTRE ENTRANCE VIA REAR OF SCHOOL)**

**THE PASTURES, DOWNLEY HP13 5JS**

**TUESDAYS 7.30 PM**

*ALSO*

**ST JAMES CHURCH HALL**

**PLOMER HILL**

**THURSDAYS 6.00 PM**



# Summer Fun Day!

## at The Woodland Pre-School

Take part in:

Woodlands' Flame Relay \*  
The Olympic Treasure Hunt  
Make an Olympic Torch  
Face Painting  
Bouncy Castle  
BBQ & Bar

Date: Sunday 1 July 2012

Time: 11-3pm

Address: The Woodland Pre-School, The Guide  
and Scout Hut, Coates Lane, Downley, High  
Wycombe, Bucks HP13 5UZ

Join in the fun! Bring family and friends!

\* The Flame Relay will start at 12pm for 2012 seconds

Registered Charity Number: 292793

Classes held  
locally at  
Maplewood  
School



# A free session with a British Judo champion

An opportunity to learn judo from one of the best, right on your doorstep! For **Boys and Girls from 5-16 years old**. There are now classes at Maplewood school with A.S Judo run by ex British Champion Alan Scott.

It's action packed fun, you can make lots of new friends and you can build both strength, flexibility and confidence.

Get your first session free if you call and book with Alan Scott on **07776 442 963**



Email: [alan@asjudoacademy.co.uk](mailto:alan@asjudoacademy.co.uk) [www.asjudoacademy.co.uk](http://www.asjudoacademy.co.uk)



## **Le De Spencers Arms** **What's On**



**CELEBRATE THE QUEEN'S DIAMOND JUBILEE**  
ENJOY TRADITIONAL ENGLISH SUMMER FARE AT THE LE DE  
**BIG LUNCH - £5.00/HEAD, FROM 12PM**  
JOIN IN THE LE DE SPOOF COMPETITION AT 4.30PM  
Sunday 3rd June

**WATCH THE JUBILEE CONCERT LIVE ON THE LE DE BIG SCREEN**  
**WITH A FREE GLASS OF PIMMS AND CREAM TEAS**  
Monday 4th June

**WATCH EURO 2012 AT THE LE DE**  
**FREE HALF TIME FOOD FOR ENGLAND GAMES**  
8th June to 1st July

**FATHER'S DAY**  
**FREE PINT FOR DAD WHEN DINING**  
Sunday 17th June

**WATCH WIMBLEDON 2012 ON THE LE DE BIG SCREEN**  
**FREE GLASS OF PIMMS WITH STRAWBERRIES AND CREAM**  
**FOR THE LADIES AND MENS FINALS**  
25th June to 8th July

**LE DE BEER FESTIVAL**  
**STEAK AND FISH BBQ SATURDAY EVENING FROM 6.30PM**  
Friday 6th July & Saturday 7th July

01494 535317  
info@ledespcncersarms.co.uk  
www.ledespcncersarms.co.uk



## Learn Enjoy Achieve Perform

Drama and Musical Theatre are exciting, healthy and creative art forms that build confidence and explore imagination, while developing physical skills and self-expression

For pupils aged between 5 -18 years old, based in Downley, High Wycombe

Visit [www.leap-performingarts.co.uk](http://www.leap-performingarts.co.uk)  
to find out more or call  
07896 048 841

EARN ENJOY  
ACHIEVE PERFORM  
LEARN ENJOY  
ACHIEVE PERFORM  
LEARN ENJOY  
ACHIEVE PERFORM

Associated with:  
LAMDA



# Downley Pharmacy

9 Cross Court, Plomer Green Ave, Downley HP13 5UW



## Opening 18<sup>th</sup> June 2012!


### Hassle Free Repeat Prescriptions

✓ Simply drop into the pharmacy once open to register or go to [www.downleypharmacy.com](http://www.downleypharmacy.com)

✓ Order your prescription in person, over the phone or online

✓ Your prescription will be ready to collect 2-3 working days later



Stay up to date by clicking  @ [www.facebook.com/downleypharmacy](http://www.facebook.com/downleypharmacy)

## YOUR NEW LOCAL INDEPENDENT PHARMACY

Email: [info@downleypharmacy.com](mailto:info@downleypharmacy.com)

Phone/Fax: 01494 513 060

MON—FRI 9am-6pm

SAT 9am-12pm

## CRAIG BAKER

PLASTERING  
&  
PLUMBING

CLEAN, RELIABLE  
AND FRIENDLY PLASTERER

Telephone or email on:

**07854087272**

[craigbaker364@hotmail.co.uk](mailto:craigbaker364@hotmail.co.uk)

## AQUARIUS (MARLOW) WINDOW CLEANING LTD

*Established Since 1984*



- Professional Window Cleaning
- All Commercial & Domestic Work Undertaken
- Fully Insured Company
- Gutter Clearance

*For a Reliable Professional Service Call*

**07970 915972**

FLACKWELL HEATH, HIGH WYCOMBE

E: [carogers@btopenworld.com](mailto:carogers@btopenworld.com)

# T L 4YOU

## Electrical & Plumbing Services

**For your entire domestic electrical and plumbing needs, from repairs and maintenance to complete installation.**

- Additional socket outlets • Fuse board upgrades •
- Full electrical installations and rewires • Smoke alarms •  
Electrical installation condition reports (EICR)  
*formerly known as "periodic inspection report"*
- Plumbing installation and repairs •
- Full Bathroom suites • Kitchen installations •

**Are you looking to reduce your electricity bills  
and get paid for being "green"?**

Then Solar PV could be your answer.

Fully certified Solar PV designed and fitted for you



The Certification Mark for Small Scale Renewable Energy Technologies



RENEWABLE ENERGY ASSURANCE LIMITED

**Contact us on 01494 443445**

**"We're a small company with a big heart"**

44 The Pastures, Downley, High Wycombe, Bucks. HP13 5LY

DOMESTIC • COMMERCIAL • INDUSTRIAL



[www.tlc4you.biz](http://www.tlc4you.biz)

## List Of Advertisers

Academy GB Doors	33	M&J Motors	43
Altea Beauty & Holistic Centre	34	Michael Day Lawncare & Landscaping	49
“Are you sitting comfortably” Upholstery	35	Modern Charm	39
AS Judo Academy	61	M T S Window Cleaning	49
Aquarius Window Cleaning	64	New Look Cleaning	47
Body & Soul Beauty Salon	37	P K Stroy, Builder	50
Carol McCullough Soft Furnishings	48	Peter Cork Plumbing	50
Charlo Architects	32	P H Decorating	46
Complete Bathrooms & Kitchens	58	Ranasana Tandoori	52
Corbel Builders	38	Revive Car Bodywork	53
Craig Baker	64	Roof Technology	67
DJ Coles Property Services	54	Sewing Machinist	47
D & P Heating	39	Spirit Hair Company	57
Downley Pharmacy	64	Suttons’ Property Maintenance	55
Hammond Construction	40	The Window Doctor	38
Holiday Club	41	The Painted Kitchen Company	36
IHD Solutions Web Design	32	The Professional Building Company	54
J H Austin Painting & Decorating	42	The Reflex Zone	48
Jill Burrell Tutor	51	TLC 4 You	65
JR Travel. Private Hire	45	Top Marks Tuition	44
Keeping It Clean	35	Wave A Wand	58
K M G Building Contractors	44	Weight Watchers	59
LEAP	63	Woodland Management	55
Le De Spencers Arms	62	Woodland Pre-School	60
Magic Carpets	47	Workmans Aircon	56
M.D . Garden Services	54	Wye Residential	2

## Credits

### Editor

The Village News is currently edited by an editorial team drawn from the Downley Communications Forum. A volunteer is sought for the permanent position of Editor. Contact:

[info@downley.org](mailto:info@downley.org)

### Layout

Pat Weedon at [news@downley.org](mailto:news@downley.org)

### Advertising

Contact:

[adverts@downley.org](mailto:adverts@downley.org)

### Distribution

Coordinated by Des Ryan. Volunteers to deliver locally are always needed.

If interested contact Des on:

[desmond.ryan@fiscali.co.uk](mailto:desmond.ryan@fiscali.co.uk) or 01494 520938

### Rates

Full Page £40 | Half Page £25 | Quarter Page £15

### Steering Committee

The Downley Communications Forum set up as

part of the Community Plan, provides oversight to the Village News, the Village enews and the [downley.org](http://downley.org) website.

**Chairman** Bill Thompson

**Secretary** Peter Loadman

**Treasurer** Clive Beard

**Webmaster** Mark Starkey

### Deadlines

The Village News is published quarterly in November, February, May and August. The deadline for adverts and copy for the next issue is 31 July 2012.

### Copy

Please send text in editable format such as \*.txt, \*.rtf, \*.doc, .docx. Photographs to accompany the text should be sent in as high a resolution as possible in any common graphics format. Copy should be sent to [news@downley.org](mailto:news@downley.org). Any copy or photographs sent to this address may also be used on the [downley.org](http://downley.org) website.

# ROOF TECHNOLOGY

**Advanced Flat Roofing Solutions**

Independently Assessed To Last 40 Years And More

## High Specification Flat Roofs And Roofline Products

We at Roof Technology install the best products available to protect your home or business from the excesses of the British climate.



Flat Roofing



Fascias, Soffits and  
Guttering



UPVC-U Cladding

**For a free survey and quotation call:**

**01494 792546**

**01491 572765**

**or email:**

**info@rooftechnology.co.uk**

Visit our website for a closer look at the products and services we offer, the guarantees we provide and discover what our customers say about us.



**www.rooftechnology.co.uk**

## Downley Diary *Please visit [Downley.org](http://Downley.org) for all the latest and up to date events and news.*

<b>June</b>	3rd	Downley Common Preservation Society working party
	4th	Downley Diamond Night on Commonsides
	5th	Downley Village Evening WI meeting at Community Centre
	8th	Gig at the Downley Donkey: Razorback
	9th	Tea Dances for the Elderly at St James Church Hall
	10th	Downley Gardening Society June meeting
	12th	Downley Evening WI at Pastures Church Hall
	12th	Parish Council meeting at the Downley Community Centre
	14th	Music Evening at The Downley School
	16th	The Queen's Jubilee Celebrations at St James Church
	18th	Jimmy's at St James Vicarage
	22nd	Family Disco In the Marquee on Commonsides at 7pm
	23rd	Downley Day On Commonsides
<b>July</b>	1st	Downley Common Preservation Society working party
	2nd	"Jimmy's" at 38 Southview
	3rd	Downley Village Evening WI meeting at Community Centre
	7th	Downley School Summer Fayre
	10th	Parish Council meeting at the War Memorial Hall
	10th	Downley Evening WI at Pastures Church Hall
	14th	Tea Dances for the Elderly at St James Church Hall
	14th	Concert on the Common Featuring "Cry Wolf"
	16th	"Jimmy's" at St James Vicarage
	19th	Woodlands Pre-school Summer term ends
	20th	School summer term ends (Bucks)
<b>Aug</b>	5th	Downley Common Preservation Society working party
	7th	Monthly meeting of the Evening WI at Community Centre
	11th	Tea Dances for the Elderly at St James Church Hall
	14th	Downley Evening WI at Pastures Church Hall
	14th	Parish Council meeting at the Downley Community Centre
	23rd	Greenbelt Christian Arts Festival